

Keller at a glance



Every day, people around the world live, work and play on ground prepared by Keller, the world's largest geotechnical specialist contractor

Established

1860

c9,500
employees

27+
acquisitions
since 2000

OUR PURPOSE

Building the foundations for a sustainable future.

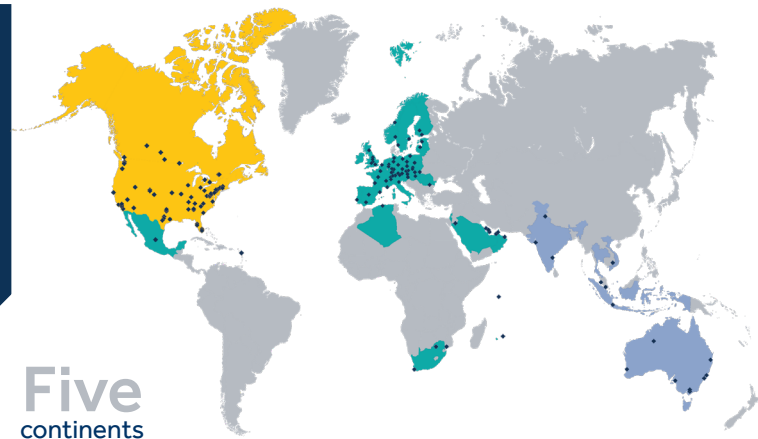
OUR VISION

To be the leading provider of specialist geotechnical solutions.

OUR STRATEGY

To be the preferred international geotechnical specialist contractor focused on sustainable markets and attractive projects generating sustained value for our stakeholders.

Local businesses will leverage the group's scale and expertise to deliver engineered solutions and operational excellence, driving market share leadership in our selected segments.



Five continents

c5,500
contracts
executed
a year

Typical range in
project value
£25k to
£10m

Average
project
value
£500k

We have the
people, expertise,
experience and financial
stability to respond
quickly and see projects
through safely and
successfully.

17 business units

North America

- Canada
- Moretrench and RECON
- Northeast
- South Central
- Specialty Services
- Suncoast
- West

Europe, Middle East and Africa (EME)

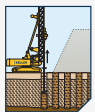
- Central Europe
- Middle East and Africa/NEOM
- North-East Europe
- South-East Europe and Nordics
- South-West Europe
- UK

Asia-Pacific (APAC)

- ASEAN
- Austral
- India
- Keller Australia

What we do

Provide solutions to a wide range of geotechnical challenges across the entire construction sector.



GROUND IMPROVEMENT



GROUTING



DEEP FOUNDATIONS



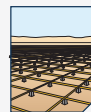
INDUSTRIAL SERVICES



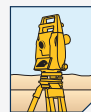
EARTH RETENTION



MARINE



POST-TENSION SYSTEMS



INSTRUMENTATION AND MONITORING



- 60%** North America
- 27%** EME
- 13%** APAC



- 30%** Infrastructure/
Public buildings
- 29%** Power/Industrial
- 23%** Residential
- 18%** Office/Commercial

Room to grow

Global geotechnical contracting market

Addressable markets

Core markets where we choose to operate

Keller today

£39.5bn

£23bn

£18.5bn

£3bn